

The Cemetery Commission met at the Mount Vernon City Hall Conference Room on Tuesday, May12, 2026 at 6:30 p.m. Commission members present were Ruth Horton, Teresa Cox, Mary Evans and Tim Legore.

April's meeting was canceled due to the weather.

Maintenance of cemetery records and documents

Tim Legore presented 3 handouts explaining the nomenclature used by the city to accurately identify the location of burials in the cemetery. Scans of the handouts are attached.

Tim Legore presented 3 handouts explaining the test pilot Excel spreadsheet he created to merge the handwritten data from the cemetery books with the WHKS GIS mapping information. We are hopeful that Tim's work can be incorporated with the new GIS mapping. Scans of the handouts are attached.

Restoration and preservation of cemetery monuments

The Cemetery Commission's four teams are beginning their leveling, repairing and resetting the 30 identified gravestones.

The American Legion has purchased the equipment needed for the conservation work with the tools kept in the cemetery garage. The CA6 gravel has been delivered.

The commission received a \$900 grant from the State Association for the Preservation of Iowa Cemeteries for Pam Kraus to restore 4 large gravestones weighing more than 3,000 pounds. Kraus will train the commission members on safe procedures for preserving the large stones.

The commission received a check for \$1,000 from Ava Stamp with the following note, "Sincere thanks for all of your work and efforts at the cemetery. I would like to make this donation towards your project of repairing headstones that I read about recently in the Sun. I wish you success beyond measure."

Marsha Dewell has created a line item for the cemetery commission funds; otherwise, the money goes into the general fund.

Maintenance of cemetery grounds

Andrew and Libby Dix from Dix Lawn Care are maintaining the cemetery grounds for 2026.

Discussion of burial services offered in Iowa

No discussion

Promoting and publicizing the cemetery

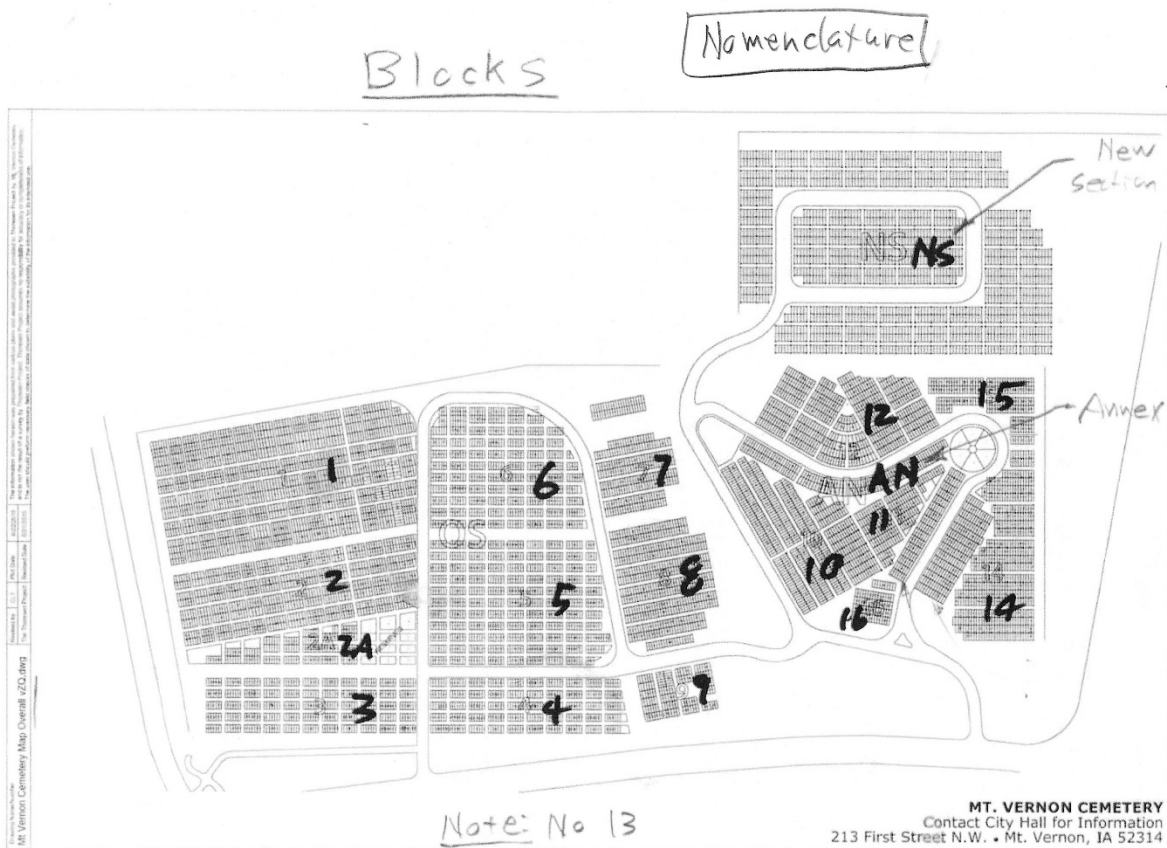
The Cemetery Walk celebrating the 250th anniversary of the Declaration of Independence is scheduled for September 20 with a rain date of September 27 from 2:00-3:30.

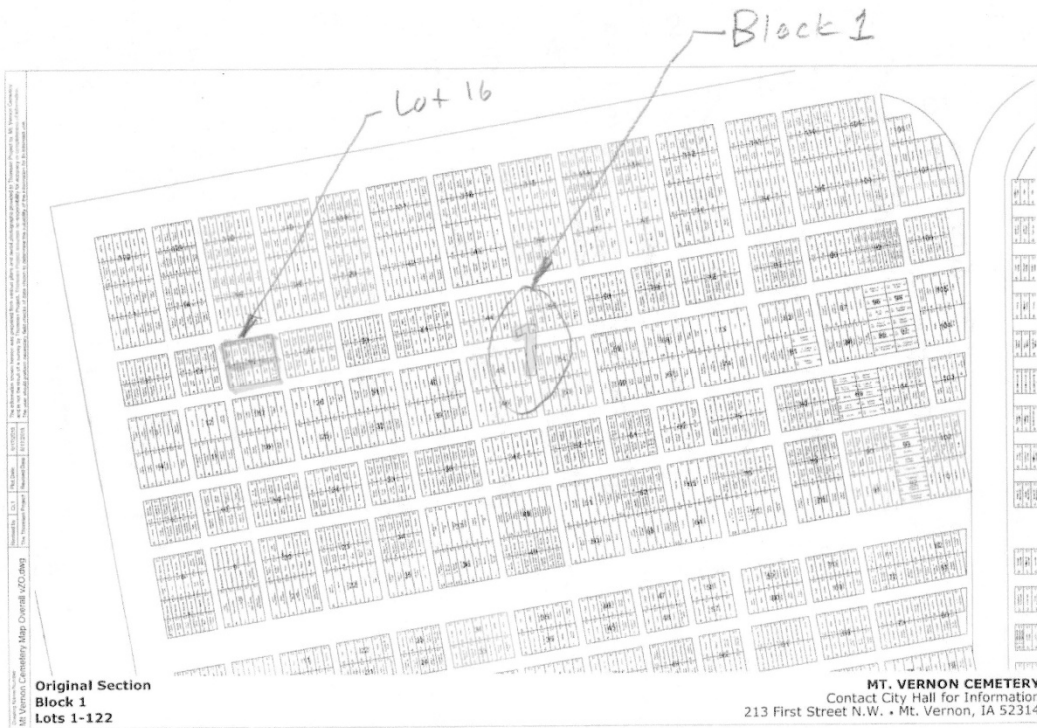
The 90-minute Memorial Day celebration is scheduled for Monday, May 25, 2026.

The meeting was adjourned at 7:30 p.m.

Respectfully submitted,

Mary E Evans





Block 1 Lot 16

Owner Map



GIS Mapping Info

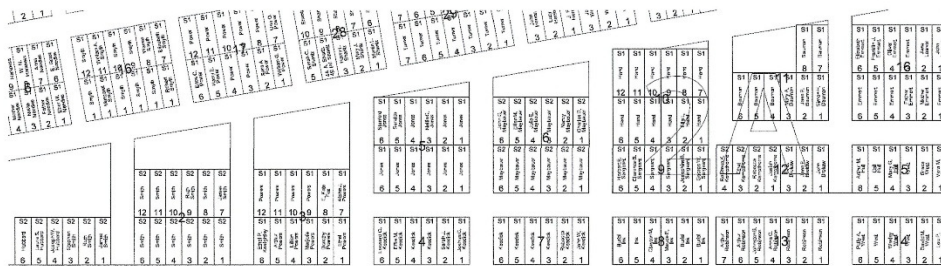
Owner Book:

REGISTER OF LOT OWNERS			Lot Diagram and Location of Grave on Lot			BURIAL RECORD		
Addition, Sub-division or Section			The entire Cemetery must be laid out in lots beginning with lot No. 1 at the front of the block. In making diagram enough space must be allowed to enter names for the largest possible number of burials on lot. (Senate File 151, 36th G. A., Laws of Iowa.)			Enter name of persons buried opposite diagram of lot, and enter number of grave from diagram and consecutive burial number from register of death certificates.		
Description of Lot	NAME OF LOT OWNER	REMARKS	Each small square represents one square foot of lot surface. Every lot must show a diagram with lot of each lot on the cemetery, showing exact size and shape. When one or two lots are shown on lot diagram, the owner's name and address must be given in column 'A', 'B' and 'C' may be used to show direction of cemetery.			Burial or Grave Permit No. on Lot	FULL NAME OF DECEASED	REMARKS
18116	Walter H. Keedles	Original 200 Jan 2, 1898 14 1-7-1898				102	Walter H. Keedles	17-14 1926
18117	Clayton B. Jank	Original 200 Mar 25, 1898 14-1-7-1898				103	Clayton B. Jank	2-23-60 1923 1823 1904 1977
18118						104		Aug 20 1922
18119						105		Nov 20 1922
18120						106		Feb 13 1926

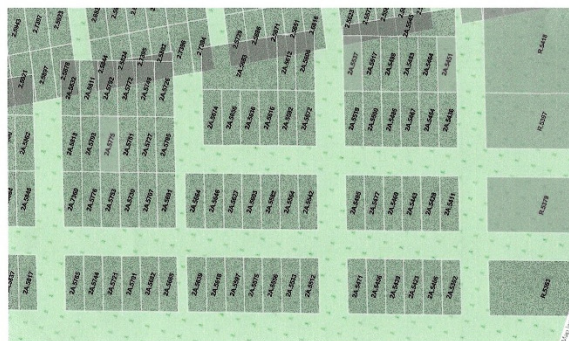
Owner Map:



Thoresen 2014 Map:



WHKS ArcGIS Map:



Tim Spreadsheet:

Block 2A, Lots 11-16
Completed Records

Burial I.D. #	Name (Last, First)	Book and Page #	Entry Position on Page (1-12)	Block	Lot	Section (purch. event)	Space	Burial Date	ArcGIS I.D. (space)	New I.D. (space)	Section owner
1	Bauman, S.H.	O26	10	2A	11	1	1	9/8/1925	2A.5572	2A-11-1-1	Bauman, S.H.
2	Bauman, Jane Elizabeth	O26	10	2A	11	1	2	8/11/1899	2A.5592	2A-11-1-2	Bauman, S.H.
3	Bauman, Mary A.	O26	10	2A	11	1	3	6/22/1905	2A.5616	2A-11-1-3	Bauman, S.H.
4	Brokaw, John	O20	6	2A	12	1	1	5/15/1893	2A.5603	2A-12-1-1	Brokaw, Eliza R.
5	Brokaw, Elizabeth	O20	6	2A	12	1	2	4/22/1896	2A.5627	2A-12-1-2	Brokaw, Eliza R.
6	Brokaw, T.S.	O20	6	2A	12	1	3	8/1/1908	2A.5646	2A-12-1-3	Brokaw, Eliza R.
7	Kemphorne, Josiah	O22	9	2A	12	2	1A	1916	2A.5542	2A-12-2-1A	Kemphorne, Josiah
8	Lambert, Rebecca K. (cremation)	O22	9	2A	12	2	1B	1937	2A.5542	2A-12-2-1B	Kemphorne, Josiah
9	Kemphorne, Rebecca	O22	9	2A	12	2	2	1930	2A.5564	2A-12-2-2	Kemphorne, Josiah
10	Kemphorne, Ethel	O22	9	2A	12	2	3	8/30/1985	2A.5582	2A-12-2-3	Kemphorne, Josiah
	empty	O20	4	2A	13	1	1		2A.5512	2A-13-1-1	Robinson, J.B.
	empty	O20	4	2A	13	1	2		2A.5533	2A-13-1-2	Robinson, J.B.
	empty	O20	4	2A	13	1	3		2A.5556	2A-13-1-3	Robinson, J.B.
11	Robinson, Anna R.	O20	4	2A	13	1	4	7/22/1948	2A.5575	2A-13-1-4	Robinson, J.B.
12	Robinson, J.B. Dr.	O20	4	2A	13	1	5	11/17/1938	2A.5597	2A-13-1-5	Robinson, J.B.
13	Robinson, Sarah E.	O20	4	2A	13	1	6	2/7/1893	2A.5618	2A-13-1-6	Robinson, J.B.
14	Robinson, Arthur	O20	4	2A	13	1	7	April 17, 1933	2A.5639	2A-13-1-7	Robinson, J.B.

Attachment Possibilities:

Description	Format
Page in Owner Book	jpg
Individual Marker Photo	jpg
Family Marker Photo	jpg
Death Certificate - All	jpg
Death Certificate - Left Page	jpg
Death Certificate - Right Page	jpg
Owner Map ?	jpg
2014 Map ?	pdf
Info sheet by Lot (Tim's)	Word
Repair Log 1	jpg or pdf
Repair Log 2	jpg or pdf